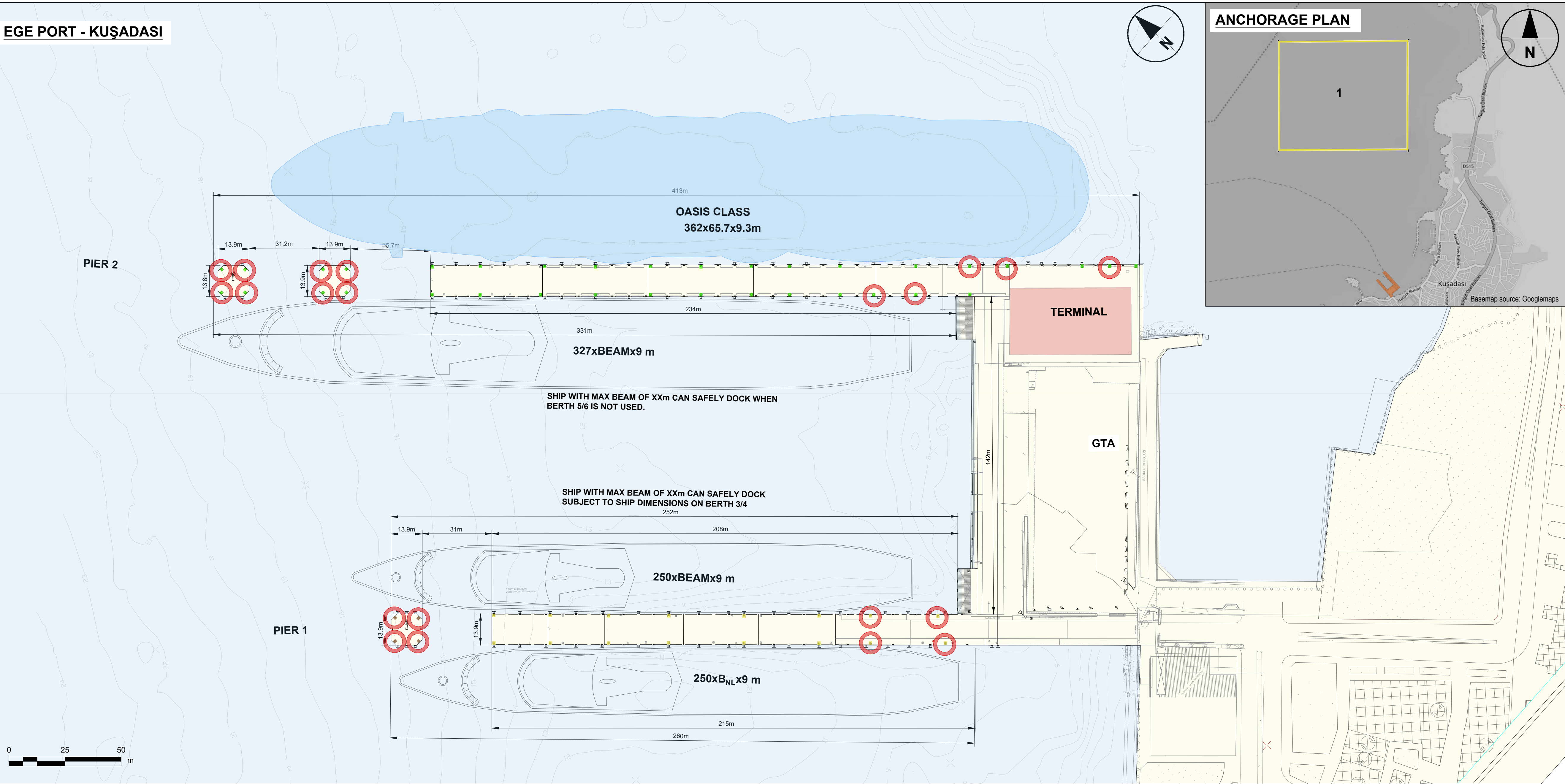
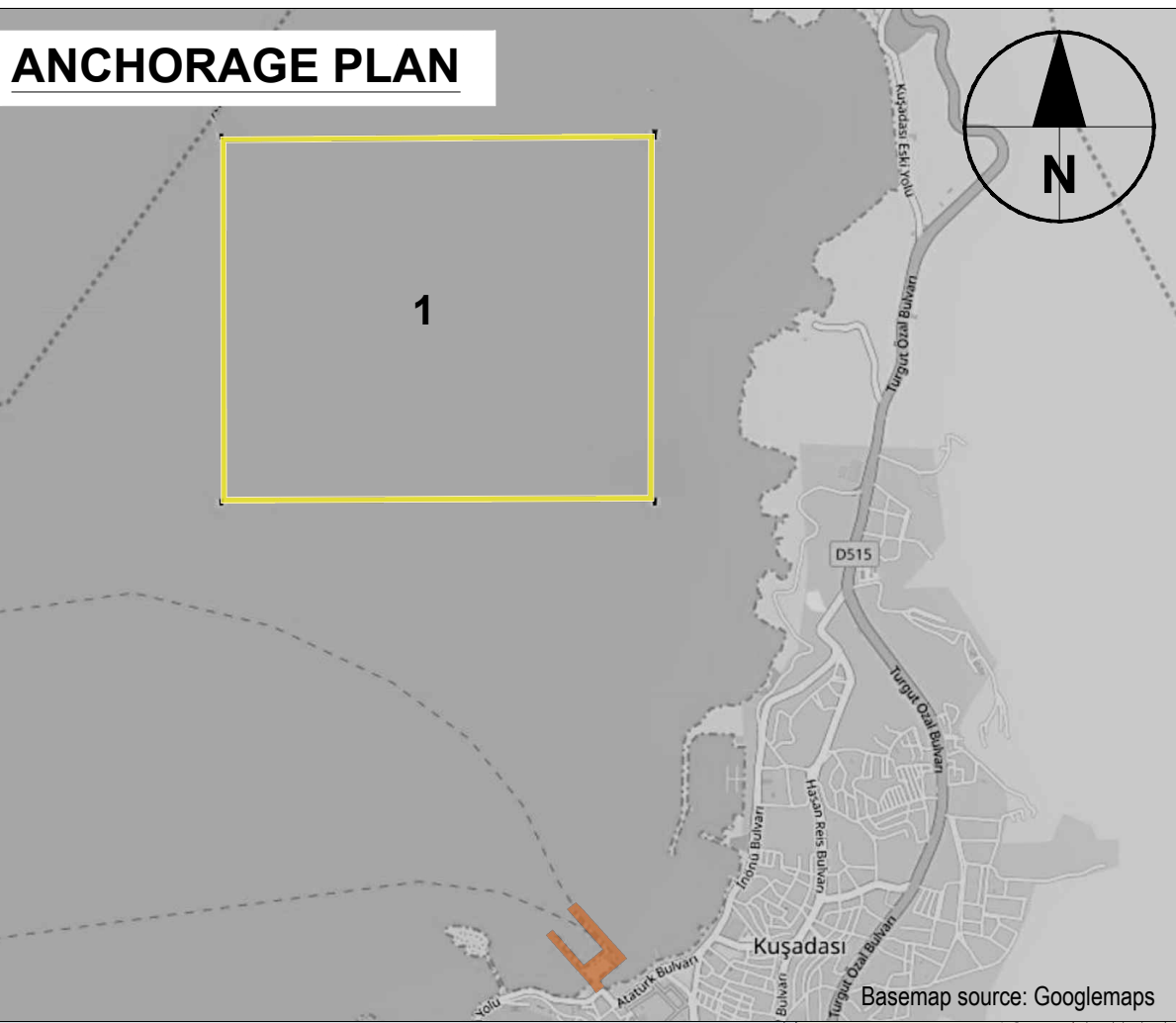


EGE PORT - KUŞADASI

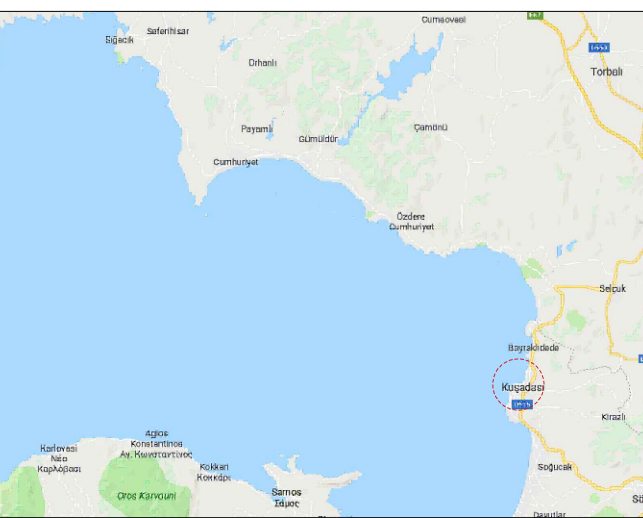


ANCHORAGE PLAN



GENERAL INFORMATION	
GPS COORDINATES	37° 51.76'N, 27° 15.33' E
TYPE OF CRUISE TERMINAL	TRANSIT & PARTIAL TURN-AROUND
CONTACT ON ARRIVAL (PORT CONTROL)	+90 614 1025/ VHF 12/ 16
CONTACT PHONE	+90 256 6141581
NOTICE REQUIRED	YES
RESTRICTIONS ON ARRIVAL/DEPARTURE TIME	NO
DATES WERE MOVEMENTS IN PORT ARE KNOWN TO BE RESTRICTED	NO
PILOTS WORKING HOURS	24/ 7
LINESMEN WORKING HOURS	24/ 7
TUGS WORKING HOURS	24/ 7
LOCATION(S) OF PILOT BOARDING AREAS:	37° 52.6' N, 27° 14.8' E
IS PILOTAGE COMPULSORY? HOW LONG IN ADVANCE NOTICE	YES, 1 HOUR NOTICE BEFORE ARRIVAL
APPROACH CHANNEL MIN. WIDTH AND MIN. DEPTH	NO CHANNEL
DISTANCE FROM PILOT TO CRUISE DOCK OR ANCHORAGE	1,2 NM NW FROM DOCK
ESTIMATED TIME FROM PILOT ST. TO DOCK/ANCHORAGE AT MAX. ALLOWED SPEED BY PORT AUTHORITY	APPROX. 15 MIN TO DOCK SPEED 3-5 KNOTS
MINIMUM DEPTH AND DIAMETER OF TURNING BASIN	20m NO RESTRICTIONS
PORT ESTABLISH MAX. VESSEL'S DRAFT	10m
PORT ESTABLISH MAX. VESSEL'S LENGTH	380m
ANY RESTRICTIONS FOR ENTERING THIS PORT?	NO
NAME/DRAFT/LOA OF LARGE CRUISE SHIP&CARGO TO SAFELY DOCK	REGAL PRINCESS/ ROYAL PRINCESS/ 9m / 330m
CAN THE PORT ACCOMMODATE OASIS CLASS SHIP?	YES
CHARTS AVAILABLE, LAST UPDATE	YES
ARE TUGS COMPULSORY? IF SO, STATE HOW MANY ARE REQUIRED	1 TUG IS COMPULSORY
POWER, TYPE AND NUMBER OF TUGS AVAILABLE	ASD TUG "PALAEMON" 5364HP / 65 TONS PULL POWER
ARE THE TUGS LOCAL (WITHIN 30 MIN)?	YES
HOW FAR IN ADVANCE DO TUGS HAVE TO BE ORDERED?	ONE TUG IS STAND BY 24 HOURS IN PORT
TSUNAMI/HURICANE PLAN IN PLACE	NO
PREVAILING WEATHER & CURRENTS	CURRENTS: DEPEND ON WIND FORCE AND DIRECTION ABT. 2 KNOTS WINDS: W-WW(SUMMER) N-NE(WINTER)
TIDE RANGE	30cm
MAX. CURRENT	0.5 KNOTS
HEIGHT OF DOCK WATER SURFACE AT: HIGHEST WATER(HW), LOWEST WATER(LW) AND CERO "0" TIDE	2,25m
DOCK WATER DENSITY	1,025
PORT SECURITY INFORMATION	VCC OPERATED 24/7 BY PORT AUTHORITY CERTIFICATES ISPS PLAN APPROVED AND VALID UNTIL 16" JANUARY 2024.

KEY PLAN



PROJECT

EGE CRUISE PORT, KUŞADASI



GLOBAL PORTS HOLDING

CAMIKEBİR, LIMAN CD. No.10, 09400 KUŞADASI/AYDIN, TURKEY
+90 256 614 15 81
[CRUISE FORECAST - LINK](#)

CONTACT OF PFSSO:
CAPT. YAVUZ OGUN yavuzo@egeports.com
VHF: CHANNEL 12 (ONE, TWO)
TEL +90 532 441 8067 +90 533 297 1988
+90 256 614 1581 EXT(2111)
+90 532 441 8067 +90 533 297 1988



DRAWING TITLE

EGE PORT,KUŞADASI - TECHNICAL DATA

LEGEND

- BOLLARD
- FENDERS
- MOORING RINGS
- WHEEL FENDERS
- OASIS CLASS
- BOLLARDS NORMALLY USED
- 200T BOLLARDS
- 150T BOLLARDS
- 120T BOLLARDS
- 100T BOLLARDS
- 80T BOLLARDS
- 75T BOLLARDS
- 60T BOLLARDS
- 50T BOLLARDS
- <50T BOLLARDS

NOTES

- ALL DIMENSIONS IN METERS UNLESS OTHERWISE NOTED. DO NOT SCALE.
- DIMENSIONS SHOWN ON PLAN OF THE LARGEST CRUISE SHIP TO SAFELY DOCK. SUBJECT TO PORT APPROVAL.
 $LO \times BEAM \times DRAFT$ m
- INDICATIVE BOLLARDS, MOORING RINGS AND FENDERS LOCATION AND DIMENSIONS.
- B_{max} : NO BEAM LIMIT

TENDERING	
TENDER BERTH POSITION	BETWEEN PIER AND AT THE REAR OF PIER No.2
MIN DEPTH OF CHANNEL OR FAIRWAY TO TENDER BERTH	3m
MIN DEPTH OF WATER AT TENDER BERTH	3m
NUMBER OF TENDER BERTHS (FOR 120 PERSON SHIP TENDERS), HOW MANY TENDER CAN DOCK AT SAME TIME?	2
TYPE OF FENDERING AT THE TENDER BERTH	MARINE TYPE RUBBER FENDERS
WHAT TYPE OF BITTS/BOLLARDS ARE AT THE TENDER BERTH?	2 TO 5 TONS BITS & RINGS
HEIGHT OF TENDER BERTH ABOVE THE WATER AT LOW AND HIGH TIDE	1m
ARE LOCAL TENDERS AVAILABLE?	NO
CAN THE SHIP'S TENDER BE USED?	YES
DESCRIBE THE WAY PASSENGERS GET ON/OFF THE TENDERS	LOWERED QUAY STRUCTURE WITH STEPS
ARE TENDER AREAS WHEEL CHAIRS AVAILABLE?	NO
CONDITION OF LANDING ON TENDER BERTH	IN GOOD CONDITION
IS THE TENDER BERTH (WOODEN-CONCRETE OR STILL)	CONCRETE

TERMINAL FACILITIES	
TERMINAL BUILDING AREA	2135m ²
No. OF X-RAY SCANNERS FOR LUGGAGE	4 DEPARTURE, 1 ARRIVAL (5 TOTAL)
No. OF X-RAY SCANNERS FOR PASSENGERS	4
No. OF COUNTER LINES	4 EACH TERMINAL (8 TOTAL)
PASSPORT CONTROL	4 LINES AT DEPARTURE, 4 LINES AT ARRIVAL (TOTAL 8)
WIFI	FREE WIFI ACCESS IS AVAILABLE
TOURISM INFO CENTER	AT THE ENTRANCE OF THE PORT
ANY OTHER ANCILLIARY SERVICE (PASSEGER&CREW SERVICES, MONEY EXCHANGE, MONEY TRANSFER, TICKETS BOOKING ETC.)	GUESS INFORMATION CENTER& POCKET WIFI

ANCHORGES	
SECURE ANCHORAGE(S) POSITION, MINIMUM DEPTH(m)	375400N-0271400E / 375400N-0271530 / E375300N-0271530E / 375300N-0271400E 20m
PREDOMINANT WIND	W-NW (SUMMER) / N-NE (WINTER)
CURRENT	NOT REQUIRED
TYPE OF BOTTOM (SAND-ROCK-CORAL)	SAND/ MUDDY SOIL
GENERAL SLOPE - BOTTOM	SAND/ MUDDY SOIL
DISTANCE TO LANDING TENDERING BERTH	7-8 CABLES
CONDITION OF LANDING FACILITIES AND TENDERS	1 TENDER CAPACITY

GTA	
AREA (m ²)	3,800 m ²
SHUTTLE BUSES REQUIRED TO ACCESS TOWN	NOT REQUIRED
DISTANCE FROM SHIP TO PICK-UP POINT	100m
No. OF BUSES SPACES	60 BUSES
NO. TAXIS SPACES	7 TAXIS
CAR PARKING SPACES	200 CARS (HOWEVER, CAR PARKING SERVICE IS NOT AVAILABLE DURING BUS PARKING OPERATIONS)
NAME OF NEAREST AIRPORT	INTERNATIONAL IZMIR ADNAN MENDERES AIRPORT (ADB), TRAVELLING TIME (WITHOUT TRAFFIC) 1 HOUR 15 MIN.
DISTANCE TO AIRPORT	82 Km
DISTANCE FROM PIER TO NEAREST TOWN CENTRE	300m, 5 MIN WALKING DISTANCE

BERTHS				
	PIER No. 1 BERTH 1/ 2	PIER No. 1 BERTH 3/ 4	PIER No.2 BERTH 5/ 6	PIER No.2 BERTH 7/ 8
MIN. UNINTERRUPTED DEPTH ACROSS PIER	9-17m REFER TO BATHY SHOWN ON THE PLAN.	9-17m REFER TO BATHY SHOWN ON THE PLAN.	9-18m. REFER TO BATHY SHOWN ON THE PLAN.	10-18m. REFER TO BATHY SHOWN ON THE PLAN.
LINEAR LENGTH	INCL. DOLPHIN 260m	INCL. DOLPHIN 263m	INCL. DOLPHIN 331m	INCL. DOLPHIN 415m
MAX. LENGTH/ DRAFT VESSEL ALLOWED	250m	250m	327m	362m - OASIS CLASS
PIER WIDTH (CLEAR DISTANCE FROM EDGE TO CLOSEST OBSTRUCTION)				
FENDERS	HYPER OMEGA TYPE SUMITOMO HOM-600H SPACING: APPROX. 15m	HYPER OMEGA TYPE SUMITOMO HOM-600H SPACING: APPROX. 15m	HYPER OMEGA TYPE SUMITOMO HOM-800H SPACING: APPROX. 15m	HYPER OMEGA TYPE SUMITOMO HOM-800H SPACING: APPROX. 15m
FENDERS LAST INSPECTION DATE	IN HOUSE INSPECTION - FEBRUARY 2019			
BOLLARDS	BOLLARDS: 100T, 120T MOORING RINGS: 15T SPACING: 20-25m	BOLLARDS: 100T, 120T MOORING RINGS: 15T SPACING: 20-25m	BOLLARDS: 150T MOORING RINGS: 15T SPACING: 20-25m	BOLLARDS: 150T MOORING RINGS: 15T SPACING: 20-25m
BOLLARDS LAST INSPECTION/TEST DATE				
PASSENGER BOARDING BRIDGES (PBBs)/GANGWAYS	N/A	N/A	N/A	N/A
PBBs RANGE	N/A	N/A	N/A	N/A
DOCK SURFACE	CONCRETE			
PREFERRED SIDE OF SHIP ALONGSIDE	DEPEND ON THE WEATHER			
DOLPHINS OR MOORING BUOYS TO TIE UP THE SHIPS?	YES, MOORING/BRESTING DOLPHINS			
TYPE (CRUISE, COMMERCIAL)	CRUISE	CRUISE	CRUISE	CRUISE
BATHY INFORMATION DATE: CHART DATUM(CD):	2010	2010	2010	2010
HOW OFTEN ARE THE CD CHECKED?:	10 YEARS	10 YEARS	10 YEARS	10 YEARS
TOXIC, EXPLOSIVE OR COMBUSTIBLE OPERATIONS OCCURRING WITHIN 1km?	NO	NO	NO	NO
PREFERENTIAL BERTHING FOR CRUISE SHIPS?	NO	NO	NO	NO
ALLOWED TO CONDUCT SOLAS DRILLS IN PORT? AND LOWER THE BOATS?	SUBJECT TO HARBOR MASTER'S APPROVAL			
ASSIGNED CRUISE SHIP CRITERIA	SIZE OF VESSEL (HOWEVER, FINLA DECISION GIVEN BY HARBOUR MASTER			
SERVICES PROVIDED AT THE PIER	LINE HANDLING, FRESH WATER, WASTE COLLECTION (SOLID & LIQUID), FORK LIFT, PORTERS, WIFI			